

IAPC SERIES

Connect under pressure ISO A couplings made to the ISO 7241:2014 Series A Standard

INTRODUCTION

Holmbury's IAPC Series ISO A couplings incorporate a pressure relief mechanism that enable them to be connected under pressure by hand.

CONSTRUCTION

- Carbon steel with trivalent plating
- Fitted with Nitrile seals

FEATURES

- Connects with up to 250 bar residual pressure (If both male and female are IAPC couplings)
- Poppet valves have balanced springs
- Locking ball system allows quick connection
- Bidirectional flow

ACCESSORIES

- Dust Caps and Plugs are available for the IAPC Series



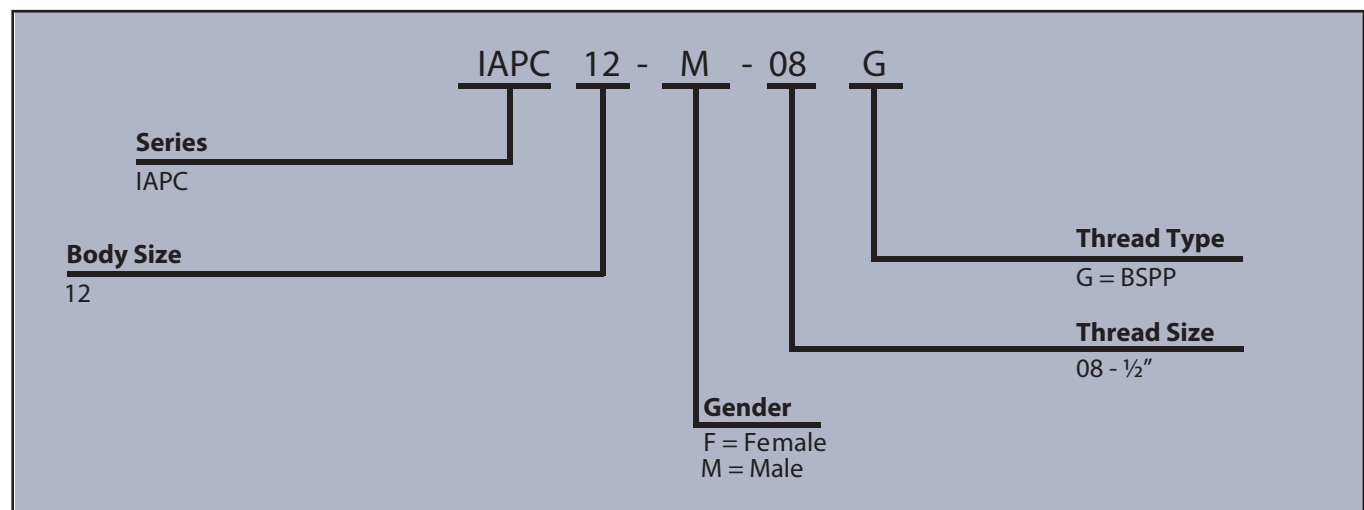
SPECIFICATIONS

- Operating temperatures (with Nitrile seals): -40°C (-40°F) to 106°C (223°F)

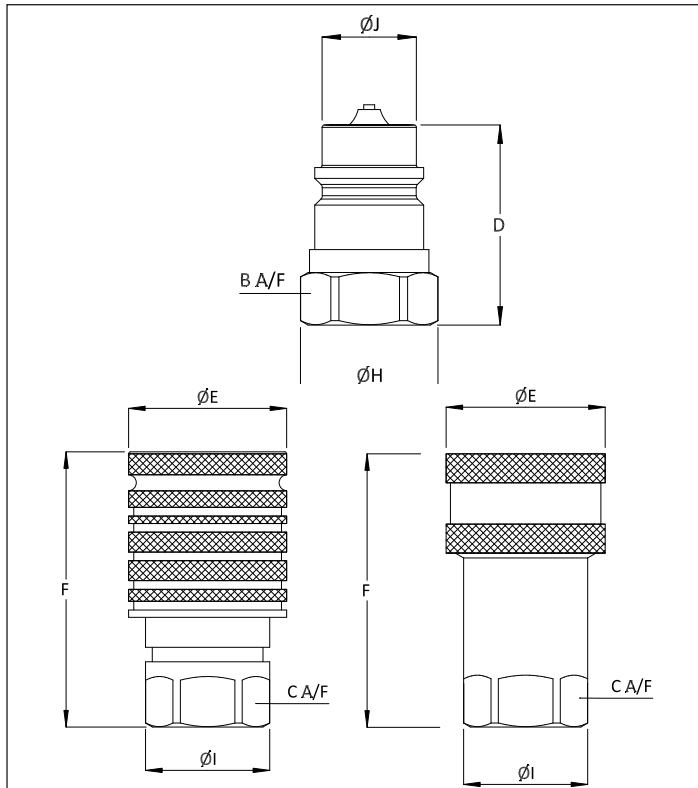
APPLICATIONS

- Agricultural
- Mobile
- Construction

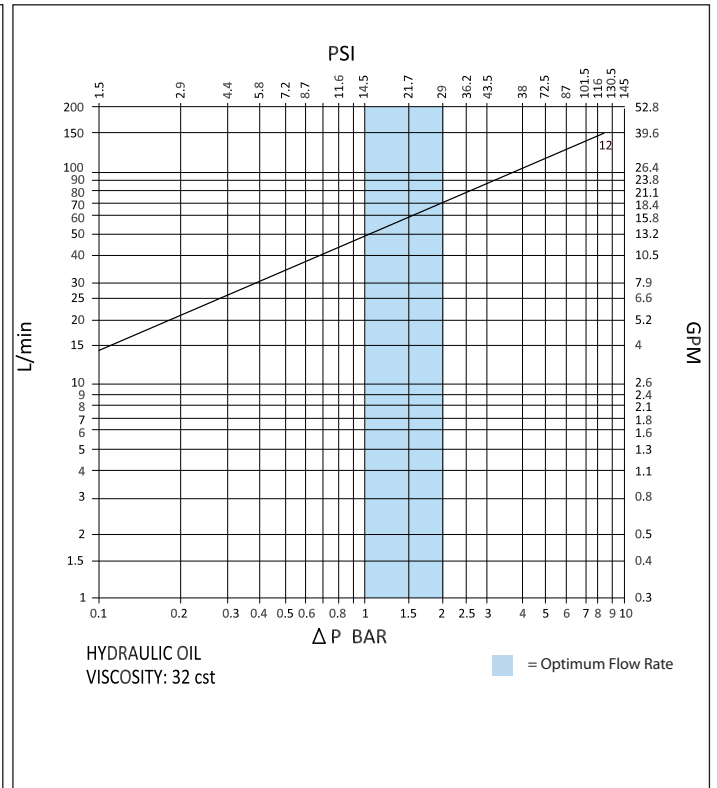
ORDER CODES



DRAWING



PRESSURE DROP CHARACTERISTICS



ISO & DIN COUPLINGS

DIMENSIONS

Size	Thread Size (A)	B	C	D	ØE	F	ØH	ØI	ØJ	Maximum Working Pressure	Burst Pressure (Coupled)	Burst Pressure (Male)	Burst Pressure (Female)
		Dimensions in mm								Bar			
		Dimensions in Inches								Psi			
IAPC 12	1/2"	26.7	26.9	43.5	38.7	66.2	29.7	30.0	20.4	320	1500	1500	1400
		1.1	1.1	1.7	1.5	2.6	1.2	1.2	0.8	4640	21750	21750	20300
IAPC 12 (PP)	1/2"	26.7			38.0	66.5		29.8		320	1500	1500	1400
		1.1			1.5	2.6		1.2		4640	21750	21750	20300

PSI= Bar x14.5 Inches= mm/25.4

